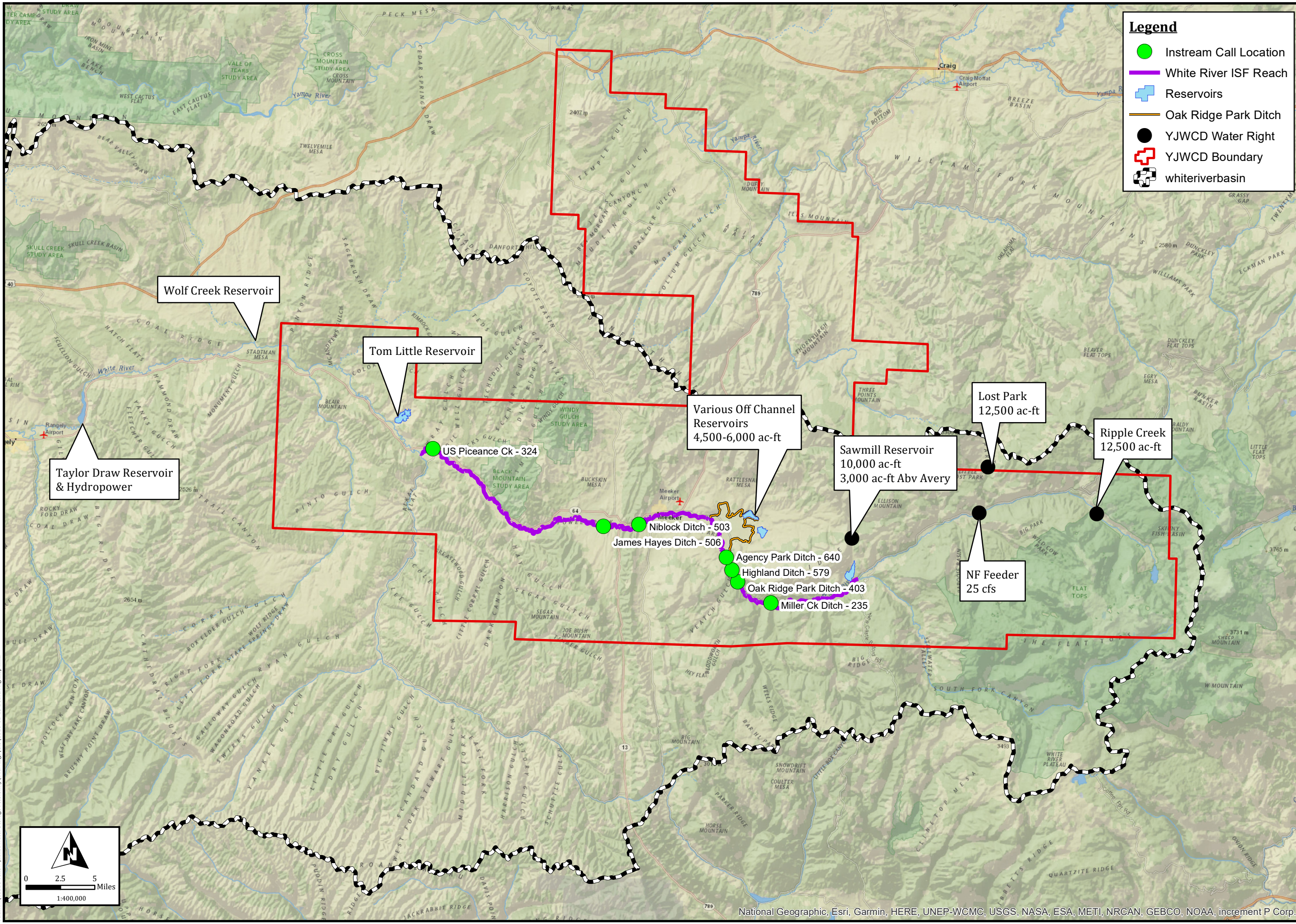


Date Saved: 2/13/2020 7:35:28 AM
 Path: N:\10118 Yellow Jacket Water Storage Feasibility\Drawings\GIS\2020-02-13 Board Mtg map.mxd



Legend

- Instream Call Location
- White River ISF Reach
- + Reservoirs
- Oak Ridge Park Ditch
- YJWCD Water Right
- YJWCD Boundary
- whiteriverbasin

Taylor Draw Reservoir & Hydropower

Wolf Creek Reservoir

Tom Little Reservoir

US Piceance Ck - 324

Various Off Channel Reservoirs
4,500-6,000 ac-ft

James Hayes Ditch - 506

Agency Park Ditch - 640

Highland Ditch - 579

Oak Ridge Park Ditch - 403

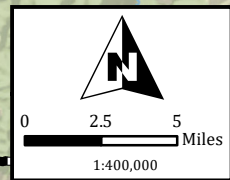
Miller Ck Ditch - 235

Sawmill Reservoir
10,000 ac-ft
3,000 ac-ft Abv Avery

Lost Park
12,500 ac-ft

NF Feeder
25 cfs

Ripple Creek
12,500 ac-ft



Applegate Group, Inc.
 Water Resource Advisors for the West
 1490 West 121st Ave, Ste 100
 Denver, CO 80234-2728
 Phone: (303) 452-6611
 Fax: (303) 452-2759
 www.ApplegateGroup.com
 e-mail: info@applegategroup.com

YJWCD
 White River ISF Call Days During Study Period
 2003-2009 and 2012-2018

No.	Rev. Date	Revision Description

Date: 2/13/2020
 Job #: 10-118
 Drawn By: CMU