



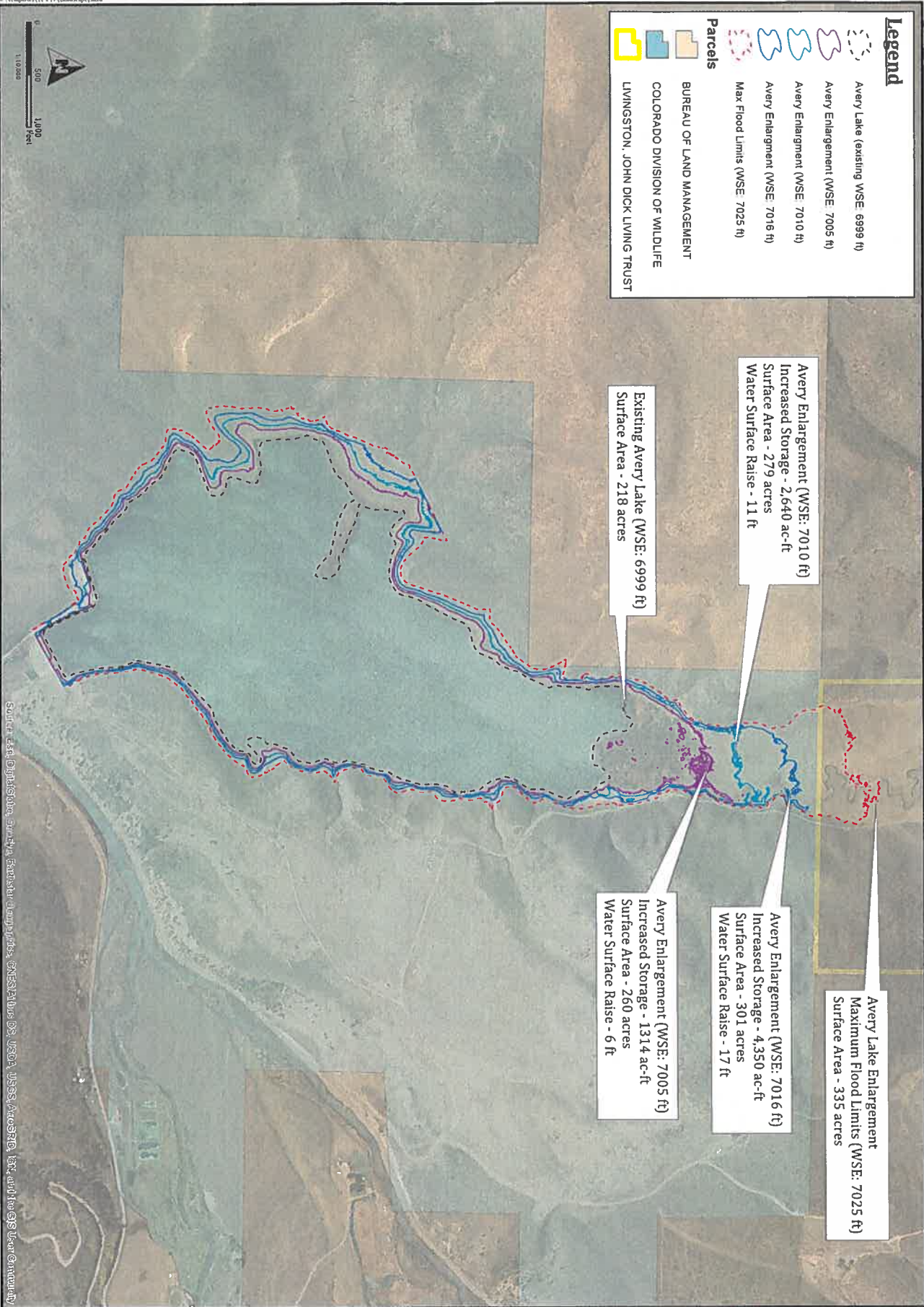
**Legend**

- Avery Lake (existing WSE: 6999 ft)
- Avery Enlargement (WSE: 7005 ft)
- Avery Enlargement (WSE: 7010 ft)
- Avery Enlargement (WSE: 7016 ft)
- Max Flood Limits (WSE: 7025 ft)

**Parcels**

- BUREAU OF LAND MANAGEMENT
- COLORADO DIVISION OF WILDLIFE
- LIVINGSTON, JOHN DICK LIVING TRUST

Source: Esri, DigitalGlobe, GeoEye, Earthstar (United States), USDA, USGS, AeroGRID, IGN, and the GIS User Community



Existing Avery Lake (WSE: 6999 ft)  
 Surface Area - 218 acres

Avery Enlargement (WSE: 7010 ft)  
 Increased Storage - 2,640 ac-ft  
 Surface Area - 279 acres  
 Water Surface Raise - 11 ft

Avery Enlargement (WSE: 7005 ft)  
 Increased Storage - 1314 ac-ft  
 Surface Area - 260 acres  
 Water Surface Raise - 6 ft

Avery Enlargement (WSE: 7016 ft)  
 Increased Storage - 4,350 ac-ft  
 Surface Area - 301 acres  
 Water Surface Raise - 17 ft

Avery Lake Enlargement  
 Maximum Flood Limits (WSE: 7025 ft)  
 Surface Area - 335 acres

Date: 10 Sep 2018			
Job #: 10-118			
Drawn By: TJD			
No.	Rev. Date	Revision Description	

**Yellow Jacket Feasibility Study**  
 A#  
 Phase 3 Lake Avery Enlargement Overview

**Applegate Group, Inc.**  
 Water Resource Advisors for the West  
 1499 West 120th Ave., Ste 200 Phone: (303) 452-6613  
 Denver, CO 80234-2728 Fax: (303) 452-2759  
 www.ApplegateGroup.com e-mail: info@applegroup.com